

## CONTEXTUAL DESIGN STRATEGY

# Integrating Modern Dairy Technology into a 15<sup>th</sup> Century Structure



MONTESTRUCTURA

### Challenge:

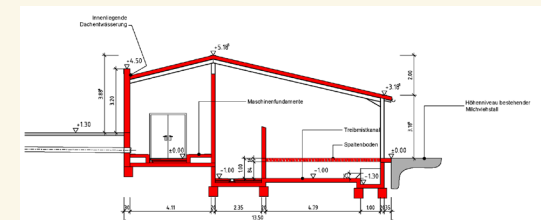
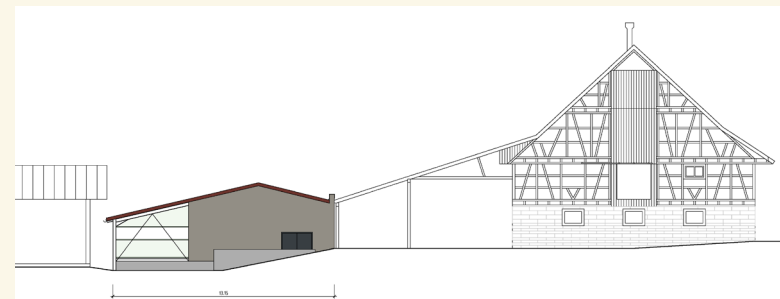
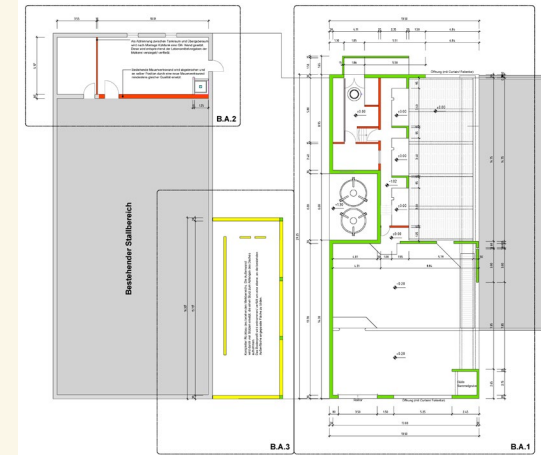
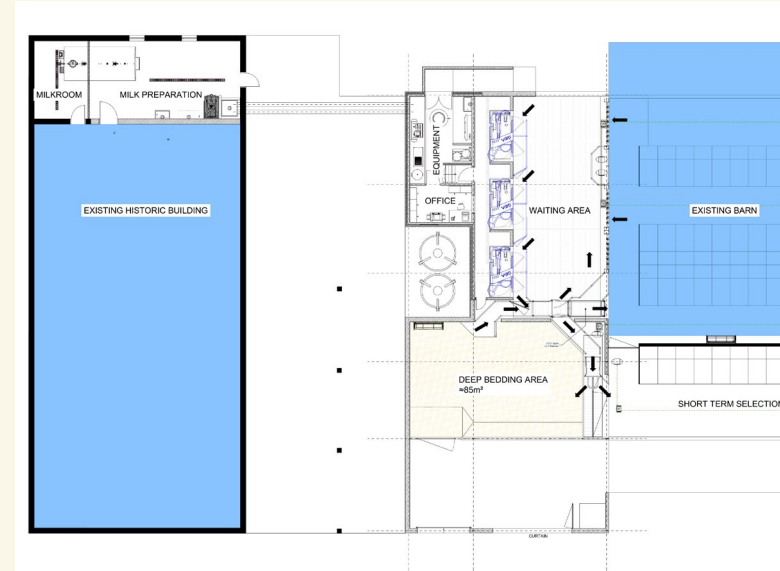
Integration of a robotic milking facility into a historic estate from the 15<sup>th</sup> century, located between existing buildings with strict spatial and fire protection constraints.

### Key Constraints

- Limited space between existing buildings.
- Protection of historic structure.
- Fire separation requirements.
- Integration without disrupting existing layout.

### Design Solution

- Compact robotic layout (3 Units).
- Defined fire separation zone.
- Controlled cow flow within constrained geometry.
- Integration into existing architectural structure.



### Key Takeaway

Even under extreme constraints, efficient and compliant dairy systems can be realized through structured design.